

Pregnancy and Covid 19 Revealing Moyamoya Syndrome

Ettouki O¹, Raja A¹, Liberat M¹, Hessani T¹, Elkhaouri I¹, Ezzouine H¹, Charra B*¹, Zakaria I², Elbenna N², Moussal N², Belgadir H², Merzem A², AmrisS O², Jehri A³, Lakhdar A³

¹Department of anesthesia and intensive care unit Hospital University center ibn Rochd Faculty of Medicine and Pharmacy Hassan 2 University, Casablanca

²Radiology department August 20 ibn rochd university hospital Faculty of Medicine and Pharmacy Hassan 2 University, Casablanca

³Department of neurosurgery ibn rochd university hospital Faculty of Medicine and Pharmacy Hassan 2 University, Casablanca

Corresponding Author: Boubaker Charra, Department of Medical Intensive Care Unit, Ibn Rochd University Hospital of Casablanca, Faculty of Medicine and pharmacy, Hassan II University of Casablanca, Morocco, E-mail: boubaker.ch68@gmail.com

Received: 📅 May 24, 2021; **Accepted:** 📅 August 12, 2021; **Published:** 📅 August 25, 2021;

Abstract

The neurological manifestations of the pandemic during coronavirus (COVID-19) has attracted the attention of several authors including stroke. However, cases associating an hemorrhagic vascular accident on Moyamoya angiopathy to covid19 viral pneumonia have only been rarely reported in the worldwide, and this was the first case reported in Morocco.

Any infection like SARS Cov-2, could precipitate the onset of the angiopathy of Moyamoya. However, the exact pathogenesis remains to be elucidated; the potential mechanisms may be related to the increase of cardioembolic events; an infectious process and hypercoagulability state in COVID-19.

We will first present the case; of a parturient with SARS CoV-2 who developed a Moyamoya Angiopathy and suffered an intracerebral hemorrhage. We will then discuss the management issues related to this situation.

Keywords: SARS COV-2; Moya-Moya syndrome; Intensive Care

Introduction

Neurological manifestations of the ongoing pandemic of coronavirus disease 2019 (COVID-19) have drawn significant attention in recent times, including a high incidence of acute strokes [1]. However, stroke associated with Moyamoya angiopathy has not been reported with new severe acute respiratory syndrome coronavirus (SARS-CoV-2) infection.

Case Report

We report a case of a 38-year-old patient with two children who was pregnant with an active 28-week gestation period. The patient initially went to a local hospital for a dry cough and dyspnoea; the clinical examination found a respiratory distress with a respiratory rate of 26 cycles per minute, a labial cyanosis, and signs of respiratory failure. The SpO₂ was at 40% in ambient air (AA) and 90% under mask at high concentration. Regarding this symptomatology an RT-PCR of the nasal swab was carried out and came back positive for COVID-19. Following the worsening of her respiratory condition, the patient was transferred to the maternity ward where she received an emergency cesarean section for maternal rescue.

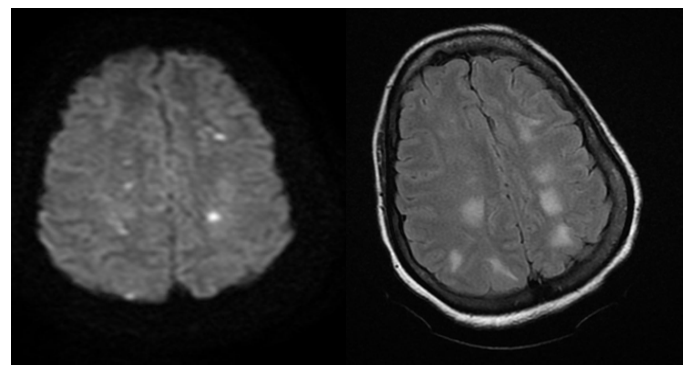


Figure 1: MRI Showing Multiples Hyperintense areas in Diffusion Weighted Sequence (A) and Flair (B) which is related to watershed infarcts

The operation was performed under general anesthesia with rapid sequence induction resulting in extraction of a premature male newborn that had an Apgar at 07/10. Post-operatively, the patient was transferred in intensive care for additional support. On the admission in the intensive care unit, the patient was intubated under ARDS mode (Vt at 6ml / kg of PIT, PEP at 8cmH₂O, FR at 22 cpm, FiO₂ at

80%). Neurologically, the patient was sedated with midazolam 100µg / kg / h and fentanyl 2µg / kg / h with symmetrical and reactive pupils [2].

Hemodynamically; she had a good blood pressure at 119/72 mmHg, heart rate (HR) at 106 beats per minute (bpm). The CT-Scan was then realized and assesses a bilateral ground-glass opacity which occupies nearly 75 percent of the total lung volume. The ECG showed a sinus tachycardia at 110 bpm, whereas the echocardiography showed an undilated left and right ventricle (LV) with EF at 60%, and PAPS estimated at 32 mmHg, the inferior cave vein was at compliant at 18mm.

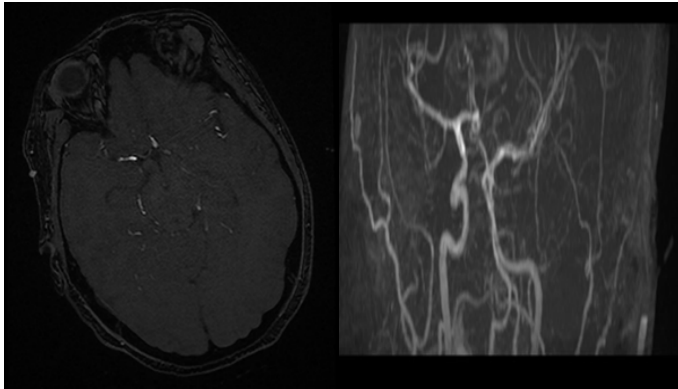


Figure 2: Angio MR sequence showing a slender aspect of the polygon of Willis

In addition, the biological assessment objectified a hyperleukocytosis with 22210/mm³ predominantly neutrophilic at 19430/mm³, a normochromic normocytic anemia at 8.7 g/dl (for which it was transfused with 2 packed red blood cells) , platelets were at 300,000/mm³, The hemostasis was correct with Prothrombine rates at 99%, TCA at 30.5sec, fibrinogen at 6.22mg/l, D-dimers were high at 2430ng/ ml. Slight cytolysis was noted with AST at 98IU/l and ALAT at 53IU/l, C-reactive protein at 193mg/l. Renal assessment and the environment interior were normal.

The urine dipstick was negative and the 24 hour proteinuria was negative for a diuresis of 2100ml, the hemolysis and thyroid tests were correct and an immunological assessment made of antinuclear Ac, anti-native DNA and antiphospholipid Ac was normal. Resuscitation management was to pursue the protective ventilation with a treatment based on ceftriaxone 2000mg per day low molecular weight heparin preventive dose, amino salicylic acid dose, antiagregant, methylprednisolone 80mg per day, an inhibitor of the pump proton, vitamin C, D and zinc associated with motor physiotherapy daily, nursing care and enteral nutrition.

On day 11 of hospitalization, when we had started ventilatory weaning after 24 hours of sedation stoppage in an awakened patient, she presented a generalized tonicoclonic seizure that led to the realization of brain CT scan with injection (figure 3).

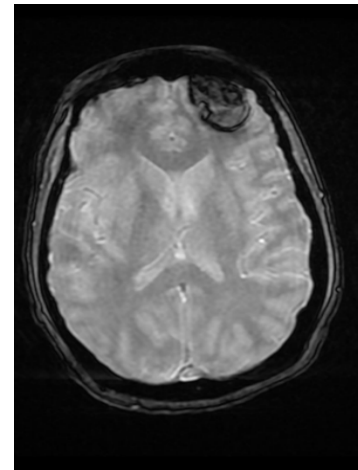


Figure 3: MRI in T2* Sequence Showing a Left Frontal Hematoma

It showed a left frontal parenchymal hematoma measuring 3.9 x 2.2x 1.7cm with slight perilesional Edema without neurosurgical indication what motivated the stopping of all of anticoagulation therapy and taking sodium valproate LP 500mg per day. After a pluridisciplinary concert, an MR-cerebral angiography was indicated and has shown these following features:

- Subacute Frontal hematoma
- A slender aspect of the polygon of willis
- watershed infarcts
- A bilateral and symmetrical T2 hyper signal in the occipital lobes may be related with a posterior reversible encephalopathy syndrome

All those findings allow us to evoke a Moya-Moya syndrome. The evolution was marked by a marked clinical and biological improvement Blood gas has shown a pH of 7.39; PCO₂ at 53.6 mmHg; PaO₂ at 79.2 mmHg; at 32.3 mmHg; SaO₂ at 95.5% for FiO₂ at 40%, PEP at 5mmHg, AI at 10, Whereas FR was at 18cpm and the patient was extubated on D21 of hospitalization.

Three days after the extubation, the questioning raised the notion of previous chronic headaches relieved by level I analgesics. Then She was transferred to neurology being conscious and oriented with a Glasgow at 15/15, reactive and symmetrical pupils, an effective cough and swallowing reflexes without sensitivomotor deficit except a slight muscle weakness of 4/5 in distal extremity of the limbs and 3/5 in proximal which is probably due to a critical illness neuromyopathy which cannot allow her to stand properly without help. Also she was hemodynamically stable with Blood Pressure at 132/83 mmHg, HR at 70 bpm and on the respiratory level she had SpO₂ at 98% at AA, and FR at 16cpm.

Discussion

The Moyamoya syndrome is a rare cause of intracranial bleeding during pregnancy The most common causes are

aneurysms ruptured arteries and arteriovenous malformations.

These factors, as well as the pre-eclampsia and eclampsia, may predispose pregnant patients with Moyamoya disease to intracerebral hemorrhage.

Careful monitoring of their blood pressure is essential to prevent intracranial complications during pregnancy and parturition. Optimal blood pressure, however, is unknown. A pressure too low blood pressure can cause cerebral ischemia due to the arterial stenosis and decreased cerebral blood flow to areas too high blood pressure can cause bleeding intracerebral due to rupture of an associated aneurysm or vessels fragile collateral.

Physiologically, two probable mechanisms of hemorrhage intracerebral are:

- The development of microaneurysms in Moyamoya periventricular collaterals and hemodynamic stress perpetual on poorly developed collaterals [3], which walls are fragile to rupture and cause bleeding.

Many factors are likely to precipitate the onset of angiopathy Moyamoya. The most common are dehydration, hypotension systemic, recent infection, hot bath, physical activity vigorous exercise, an emotional explosion, an increase in body temperature, crying, singing, wind instruments, thyrotoxicosis and ketoacidosis [4], and the last common finding was hyperventilation induced cerebral hypoperfusion [5].

Any kind of vascular inflammation is expected to lead to a hyperplasia and pathological remodeling of smooth muscle cells vascular, germination of endothelial cells leading to angiogenesis which announces a narrowing of the lumen and formation collateral. The increase in inflammatory cytokines like this occurs produced in the "cytokine storm" induced by SARS-CoV-2 may influencing certain poorly understood process leading to angiopathy of Moyamoya [6].

Recently, CTA and MRA have been widely accepted for diagnosis and evaluation of MMD and MMS. Computed tomography angiography is especially helpful in patients who are presented to the emergency department with suspected complications due to vascular abnormalities. Compared with the DSA, both of CTA and MRA are less time-consuming and safer, although the CTA still accompanies with radiation exposure and the MRA is relatively time-consuming and limited in critically ill patients.

- MRA shows also the following findings:
- Generalized cerebral atrophy is a common finding.
- Watershed infarcts are also commonly seen.

- Collateral circulation forms from a number of sources

The management of the patient combines medical treatment including antiplatelet agents such as aspirin with vasodilating agent such as calcic inhibitor and surgical or endovascular treatment.

The surgical revascularization to prevent ischemic stroke is an effective treatment for patients with MMD with an ischemic presentation [6]. Although still controversial, revascularization surgery to prevent further hemorrhage has also been performed by many neurosurgeons recently; an endovascular treatment has also been introduced through embolization of a ruptured aneurysm of the collateral vessels and angioplasty of a narrowed segment with or without stenting

Conclusion

SARS-CoV-2 infection associated with hemodynamic stress and emotional disturbances as well as the cytokine storm could act as triggers of Moyamoya angiopathy, the evolution of which may be sometimes Devastating. Hence the importance of adequate and early management for those patients.

References

1. Enomoto H., Goto H (1986) Moyamoya disease presenting as intracerebral hemorrhage during pregnancy: case report and review of the literature. *Neurosurgery* 20: 33-35. [Crossref]
2. Miyakawa I., Lee HC., Haruyama Y (1986) Occlusive disease of the internal carotid arteries with vascular collaterals (moyamoya disease) in pregnancy. *Archives of Gynecology and Obstetrics* 237: 175-180. [Crossref]
3. Mikami T., Suzuki H., Komatsu K., Mikuni N (2019) Influence of inflammatory disease on the pathophysiology of Moyamoya disease and quasi-moyamoya disease. *Neurologia medico-chirurgica*. 59: 361-370. [Crossref]
4. Zhang H., Zheng L., Feng L (2019) Epidemiology, diagnosis and treatment of moyamoya disease. *Experimental and therapeutic medicine* 17: 1977-1984. [Crossref]
5. Samanta D (2016) A girl with "weakness": can hyperventilation from crying give a clue to the diagnosis? *Pediatric Neurology* 54:95-96.
6. Asadi-Pooya AA., Simani L (2020) Central nervous system manifestations of COVID-19: a systematic review. *Journal of the Neurological Sciences* 413:116832. [Crossref]